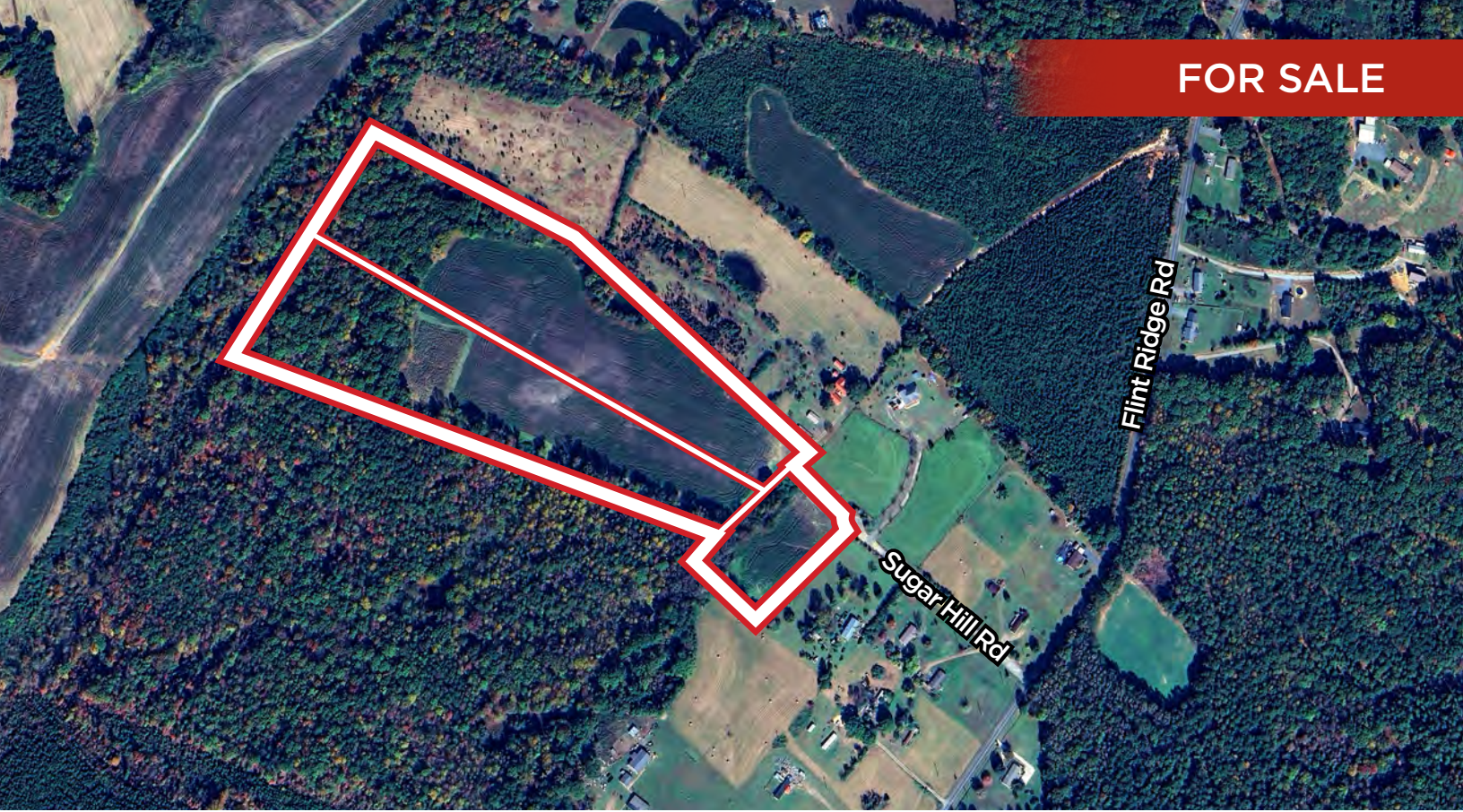


FOR SALE



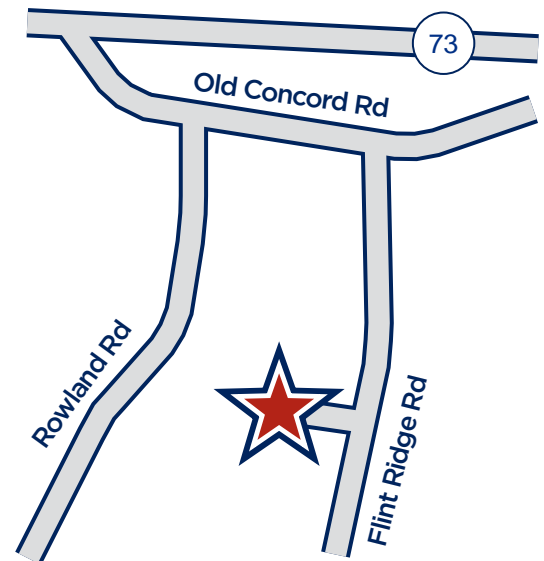
# SUGAR HILL ROAD LAND

Albemarle, North Carolina

## +/-31.2 Acres of Land (3 Parcels) Available

Site is located minutes from Highway 73 between Albemarle and Mount Pleasant.

- Size:** +/-31.2 acres (3 parcels)
- Tax Parcel:** 650801170896, 650801081461, 650801083733
- Address:** Sugar Hill Road, Albemarle, NC
- Price:** \$16,000/Acre
- Zoning:** RA
- Utilities:** Septic and Well needed
- Comments:**
- Stunning, picturesque land
  - Ideal for private retreat or mini-farm
  - Both larger parcels have septic permits for 4BR home



**Piedmont Land Sales, Inc.**

**Don Pippin**

704.347.0105

[dpippin@piedmontlandsales.com](mailto:dpippin@piedmontlandsales.com)

# SUGAR HILL ROAD LAND

FOR SALE

Albemarle, North Carolina



Parcel #650801170896  
+/-2.6 Acres



Piedmont Land Sales, Inc.

Don Pippin

704.347.0105

[dpippin@piedmontlandsales.com](mailto:dpippin@piedmontlandsales.com)

# SUGAR HILL ROAD LAND

FOR SALE

Albemarle, North Carolina



Parcel #650801081461  
+/-14.6 Acres



Piedmont Land Sales, Inc.

Don Pippin

704.347.0105

[dpippin@piedmontlandsales.com](mailto:dpippin@piedmontlandsales.com)

# SUGAR HILL ROAD LAND

FOR SALE

Albemarle, North Carolina



Parcel #650801083733  
+/-14.0 Acres



Piedmont Land Sales, Inc.

Don Pippin

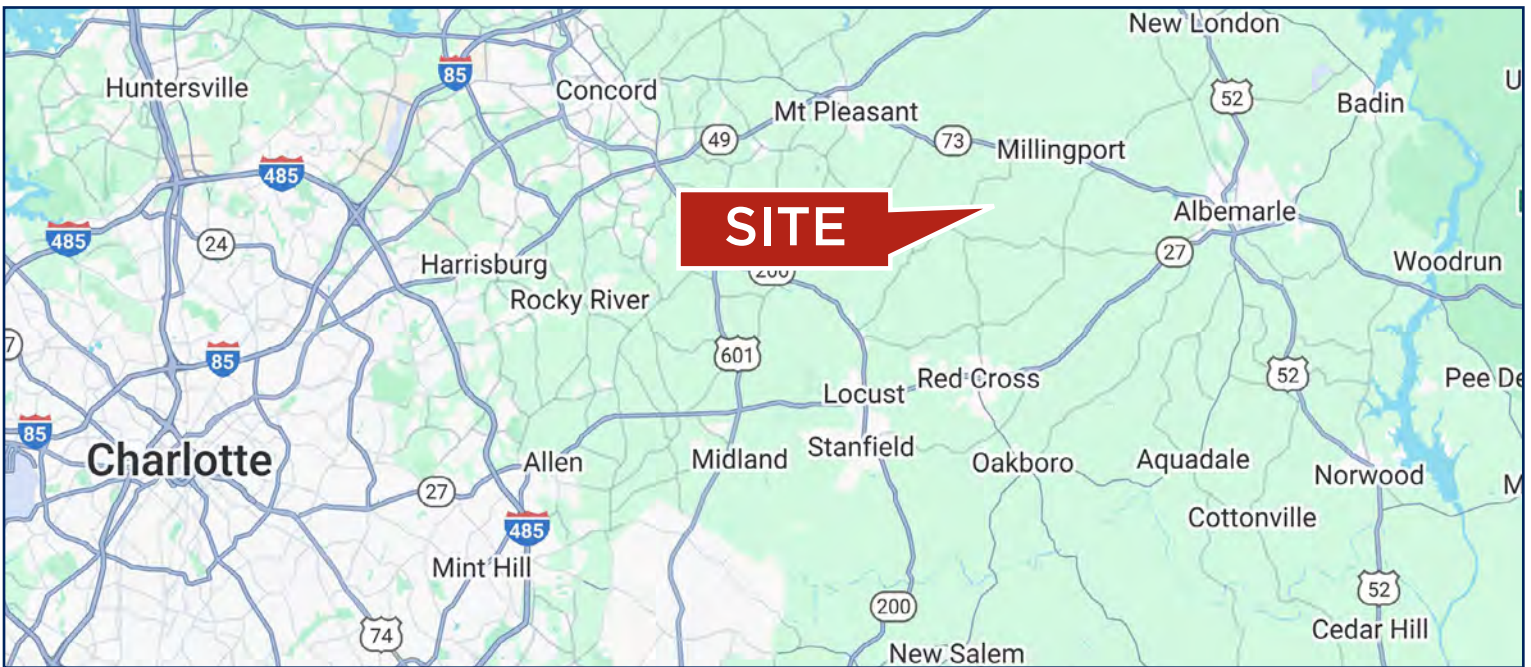
704.347.0105

[dpippin@piedmontlandsales.com](mailto:dpippin@piedmontlandsales.com)

# SUGAR HILL ROAD LAND

FOR SALE

Albemarle, North Carolina



Piedmont Land Sales, Inc.

Don Pippin

704.347.0105

[dpippin@piedmontlandsales.com](mailto:dpippin@piedmontlandsales.com)